



ASAP Conference

September 23, 2019

BHCC Opportunities beyond VBP Contracting

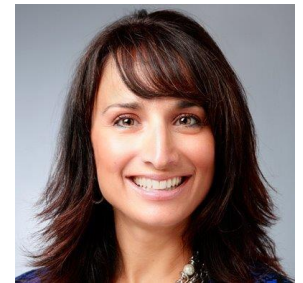
Anne Constantino, CEO Horizon Health Services,
Vice President Value Network Board

aconstantino@horizon-health.org



Andrea J. Wanat, VP of Operations,
Value Network, BHCC, IPA

awanat@valuenetworkwny.org



Value Network

www.valuenetworkwny.org

Board of Directors – Introduction and Welcome



Horizon
HEALTH SERVICES

best|self
BEHAVIORAL HEALTH




ENDEAVOR
HEALTH SERVICES



Spectrum
Health & Human Services



Value Network

www.valuenetworkwny.org

Pre- BHCC – DSRIP

2015 - Director of Behavioral Health

Strong individual agencies

Open to change – but hesitant

Competitors to Collaborators



Agenda

- Noted DSRIP Challenges with VBP contracting
- New opportunities
- Grants secured
- Clinical Integration strategies



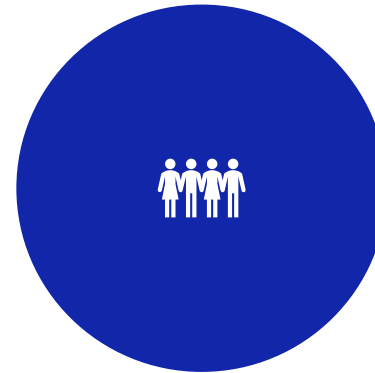
Grants Secured in Three Project Areas



Transportation



Communication
and Integration



Training and
Workforce
Development



Value Network

www.valuenetworkwny.org

Transportation -Innovation Funding Award



Collaboration with our local DSRIP PPS – Millennium Collaborative Care



Contract with Uber Health



Potential Cost Savings are appealing



Identified key metrics to focus on:

F/U after BH discharge 7/30 days
Adult 30 day readmissions
Potentially preventable ED visits



Value Network

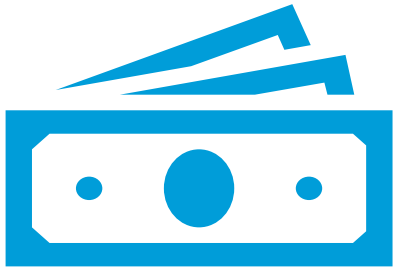
www.valuenetworkwny.org

Communication and Behavioral Health Integration

- Innovation Funding Award with CPWNY PPS
- Goal to communicate more effectively across Behavioral Health and PCP sites
- Focus Groups with Primary Care Partners
 - Best modes of transmission
 - Key areas to share in communication
 - Change in mental health status (stable/regressing)
 - Change in medications
 - Social Determinants of Health Factors



Value Network Training Grant

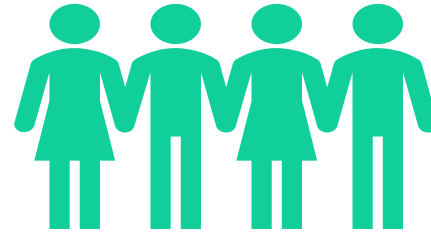


Funding from Erie
County Department of
Mental Health



Four tracks:

- Entry Level Professional/ Clinical Supports
- Clinical
- Leadership
- Quality Improvement



One staff member per
track per agency (total
of 4 of spots per
agency)



Potential to renew
annually and train new
staff each year



Value Network

www.valuenetworkwny.org

Clinical Integration Strategies

- Comprehensive network strategy for case management
- Marketable to MCOs
- Piloting strategies on a smaller scale



Pilot Projects

TIP Project –
focusing on
Maternal/Child
Health

BHQIP Project
with Amerigroup
8 Metrics



Data Analytics and Future Vision



Value Network

www.valuenetworkwny.org

Key Quality Metrics

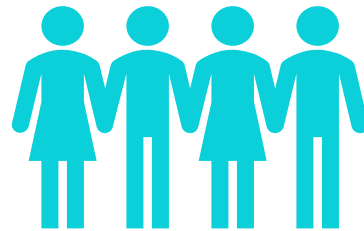
Measures	Measures
Acute Hospital Utilization (HEDIS)	Suicide Risk-assessment
Emergency Department Utilization (HEDIS)	7-Day Follow-Up visit After Substance Use Disorder Inpatient Discharge (SUD-7)
Plan All Cause Readmissions (HEDIS)	Follow up after ED Visit for Alcohol and Other Drug Abuse or Dependency- (FUA) 7 and 30 day (HEDIS)
Controlling High blood Pressure (CBP) (HEDIS)	Follow-Up After Hospitalization for Mental Illness for patients discharged for MH admission- (7/30 days) (HEDIS)
Diabetes Screening and Monitoring for People with Schizophrenia or Bipolar Disorder (SSD, SMD, SMC) (HEDIS)	Initiation and Engagement of Alcohol (IET) and other drug abuse or dependency treatment (HEDIS)
Depression Remission or Response for Adolescents and Adults (DRR) (HEDIS)	Follow-up care for children prescribed ADHD medication- Initiation Phase (ADD-i) (HEDIS)
Utilization of the PHQ-9 to Monitor Depression Symptoms for Adolescents and Adults (DMS) (HEDIS)	CVD monitoring for People With Cardiovascular Disease and Schizophrenia – (SMC) (HEDIS)
	Adults' Access to Preventive/Ambulatory Health Services (AAP) (HEDIS)



Future Vision



Shared Electronic Health
Records



Shared Social Determinants
of Health Forum



Collaboration on resources,
strategies and training



Value Network

www.valuenetworkwny.org



Questions?

A background image showing several hands of different skin tones stacked in a circle, symbolizing unity and teamwork. The entire image has a blue color overlay.

Thank You