

The Myth of "Acting Alone":

A Call to Action for Immediate, Intentional, and Sustainable Change

ASAP JEDI Conference Presentation
June 23, 2022

Susan X Jane for Navigators Consulting

Our Rules of Engagement for Today

Respect yourself and others

Practice thinking and speaking past discomfort

Push through feeling into critical thinking

Ask questions and share perspectives to broaden our discussion

Use both/and thinking

Understand people are actively experiencing trauma in different ways

May 14, 2022





Katherine Massey, 72



Heyward Patterson, 67



Pearl Young, 77



Celestine Chaney, 65



Andre Mackniel, 53



Roberta Drury, 32



Ruth Whitfield, 86



Aaron Salter, 55

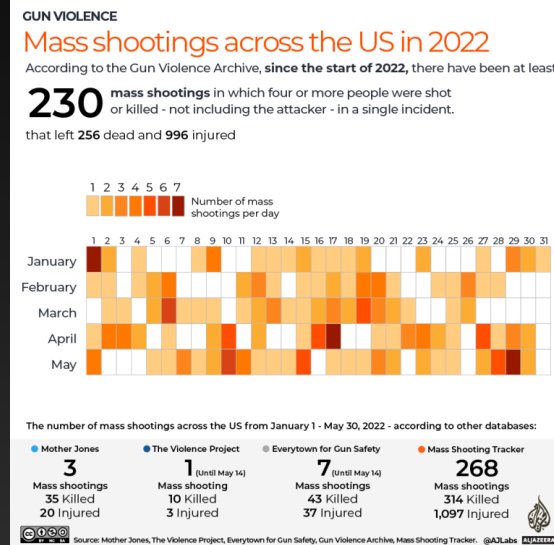


Margus Morrison, 52

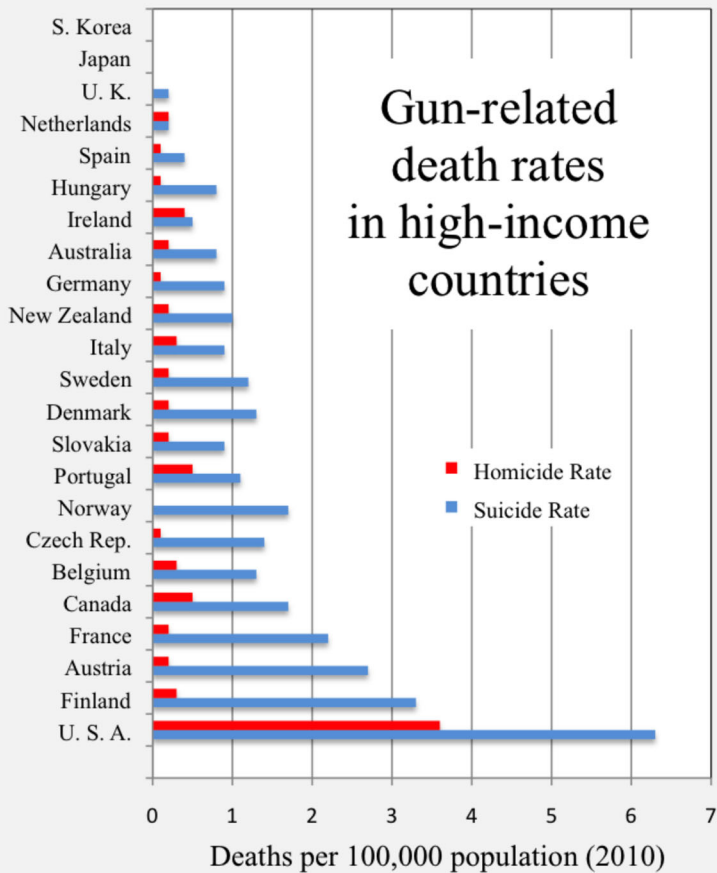


Geraldine Talley, 62





Why?



GUN VIOLENCE TRENDS

TOTAL NUMBERS OF MASS SHOOTINGS

2021 693

2020 611

2019 417

TOTAL NUMBER OF HOMICIDE/MURDER/UNINTENTIONAL GUN VIOLENCE DEATHS (NON-SUICIDE)

2021 20,889

2020 19,508

2019 15,485

TOTAL NUMBER OF HOMICIDE/MURDER/UNINTENTIONAL GUN VIOLENCE DEATHS



5451

AS OF APRIL 17, 2022

5445

AS OF APRIL 17, 2021



TOTAL NUMBER OF MASS SHOOTINGS



139

AS OF APRIL 17, 2022

148

AS OF APRIL 17, 2021

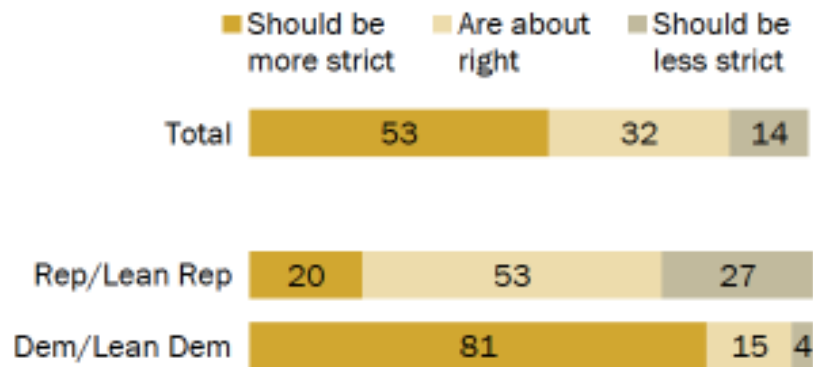


SOURCE: GUN VIOLENCE ARCHIVE

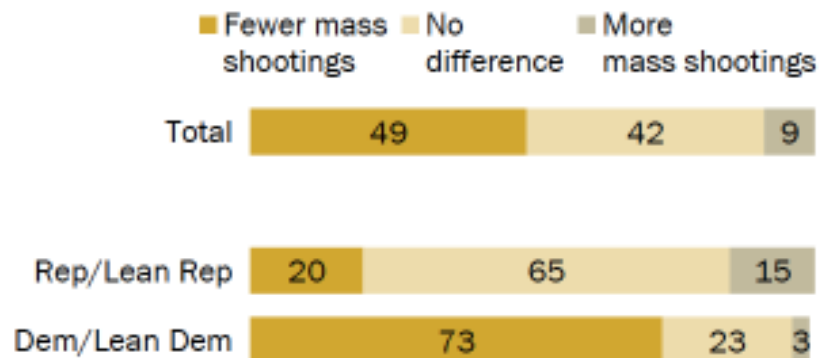
abc NEWS

Narrow majority favors stricter gun laws, but deep partisan divisions persist

% who say gun laws ...



% who say if it was harder for people to legally obtain guns in the U.S. there would be ...



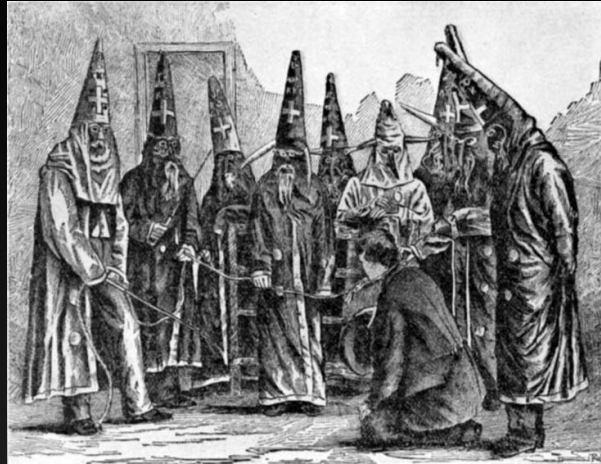
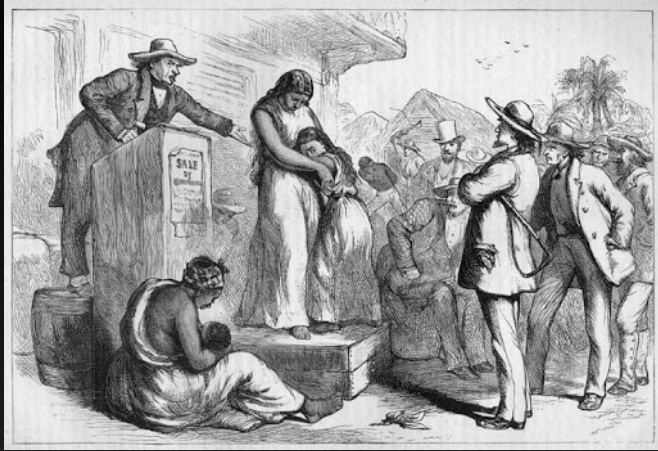
SENATE RELEASES GUN CONTROL LEGISLATION

>>>>> NRA OPPOSES <<<<<

"My ancestors, brought to America through the slave trade were the first currency of America, let me say that again for the people in the back, my ancestors, the first currency of America were stripped of their heritage and culture, separated from their families, bargained for on auction blocks, sold, beaten, raped and lynched," Everhart said. "Yet I continuously hear after every mass shooting that this is not who we are as Americans and as a nation. Hear me clearly, this is exactly who and what America is."



Zeneta B Everhart and
Zaire Goodman



The 4 I's Of Oppression

Ideology
Generates ideas about
Truth, beauty, power,
morality
Manufactures Consent
(hegemony)
Informs Ways of thinking
Defines normal
Decides "the way it is"

Institutional
Policies Practices and Procedures
Formal structure for engagement
Bestows benefits and privileges
Enforces rules with consequences

Individual
Beliefs and values
Thoughts and feelings
about race
Lived experience
Family tradition

Interpersonal
Vertical and horizontal
Formal and informal
Family and Friends
Coworkers/ Team mates
Authority figures
Romantic relationships



The 4 I's Of Oppression

Ideology
White Supremacy
Patriarchal Capitalism

Institutional
Law enforcement, mental health
supports, school professionals,
family and community supports

Individual
The perpetrator

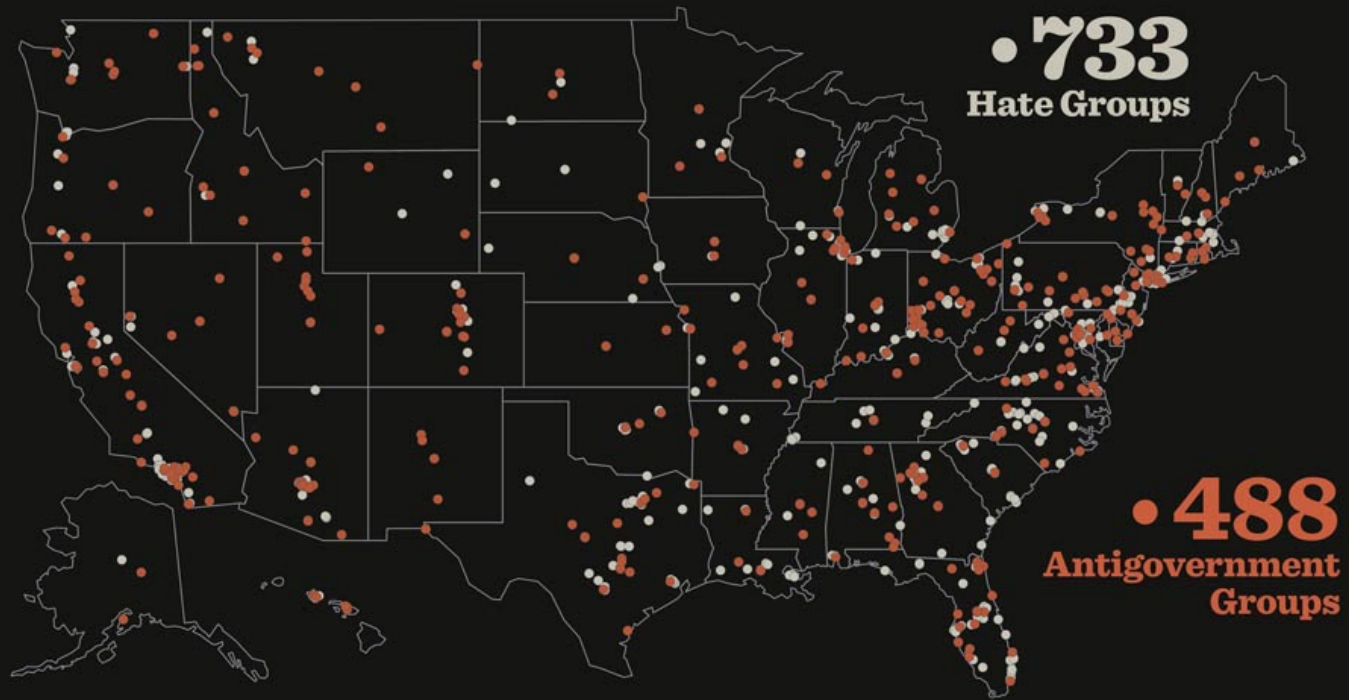
Interpersonal
Relationships at home,
at school, in the community
and among his peers irl and
the internet



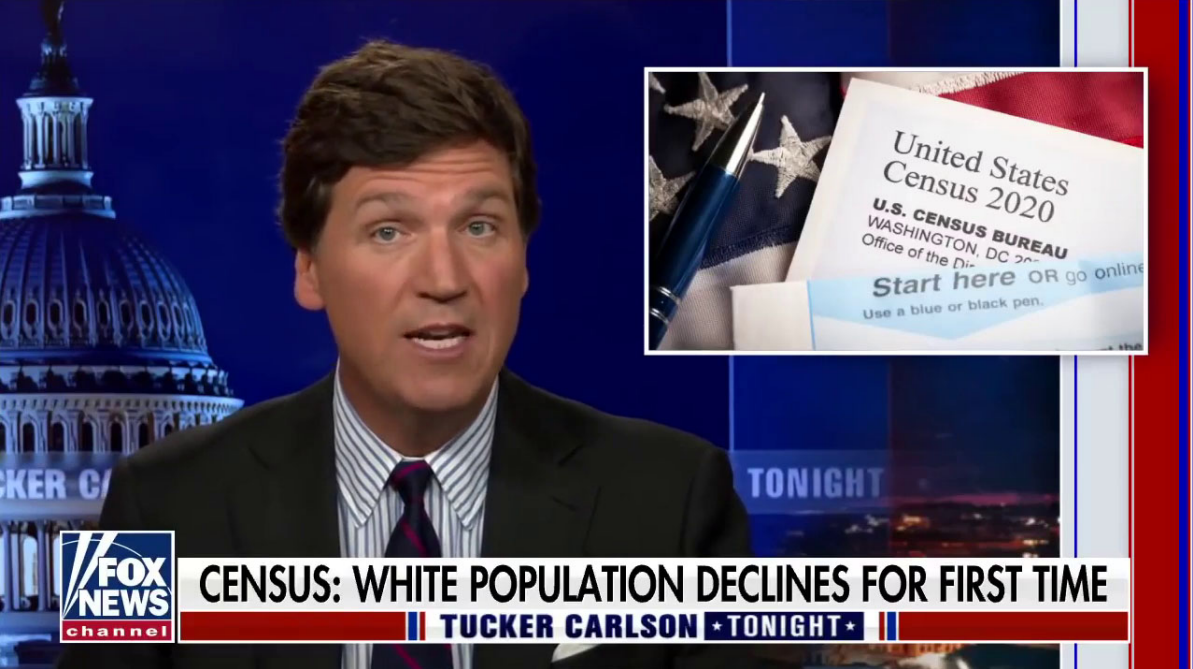
All across America

Active Antigovernment And Hate Groups

In The United States In 2021

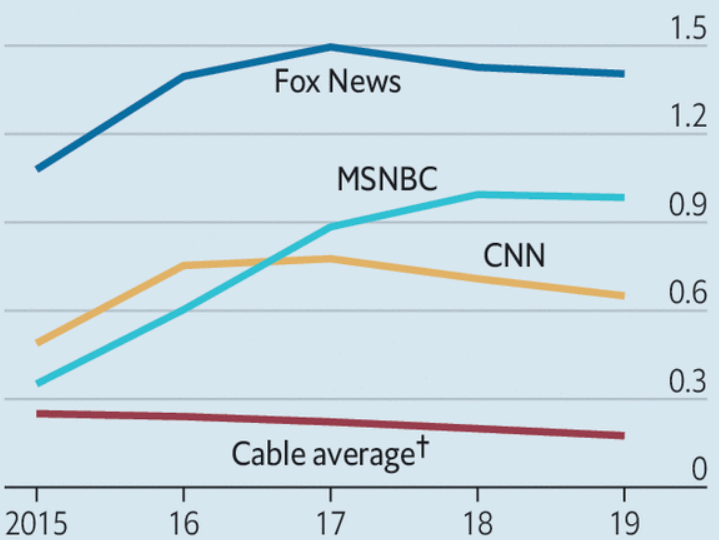






Eyes right

United States, viewers of cable television*
By channel, average, m

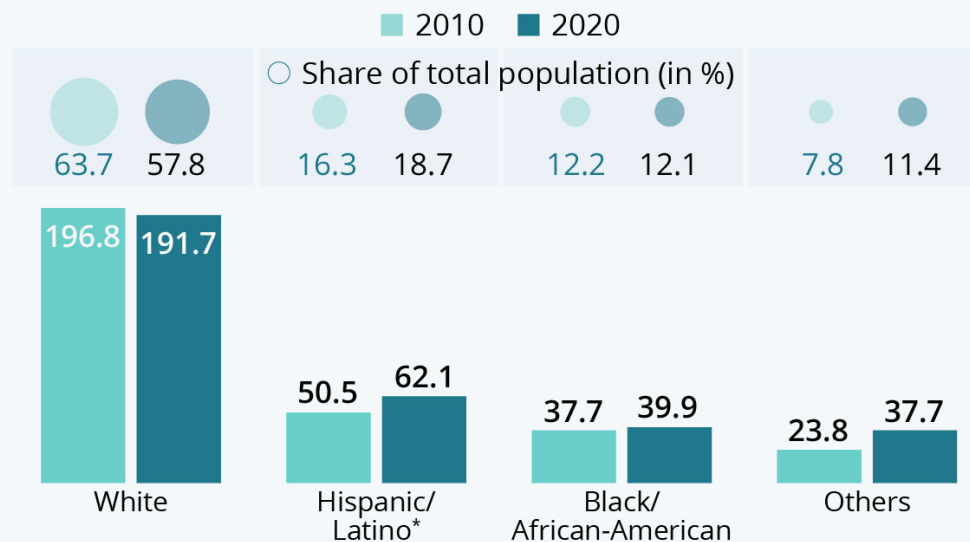


Sources: Nielsen; MoffettNathanson analysis
*Total live and same-day audience
†Excluding news

**What is the grievance
at the center of
replacement theory?**

Number of White People in the U.S. Shrinks

Population by racial/ethnic group in the United States (in million) and share of total population

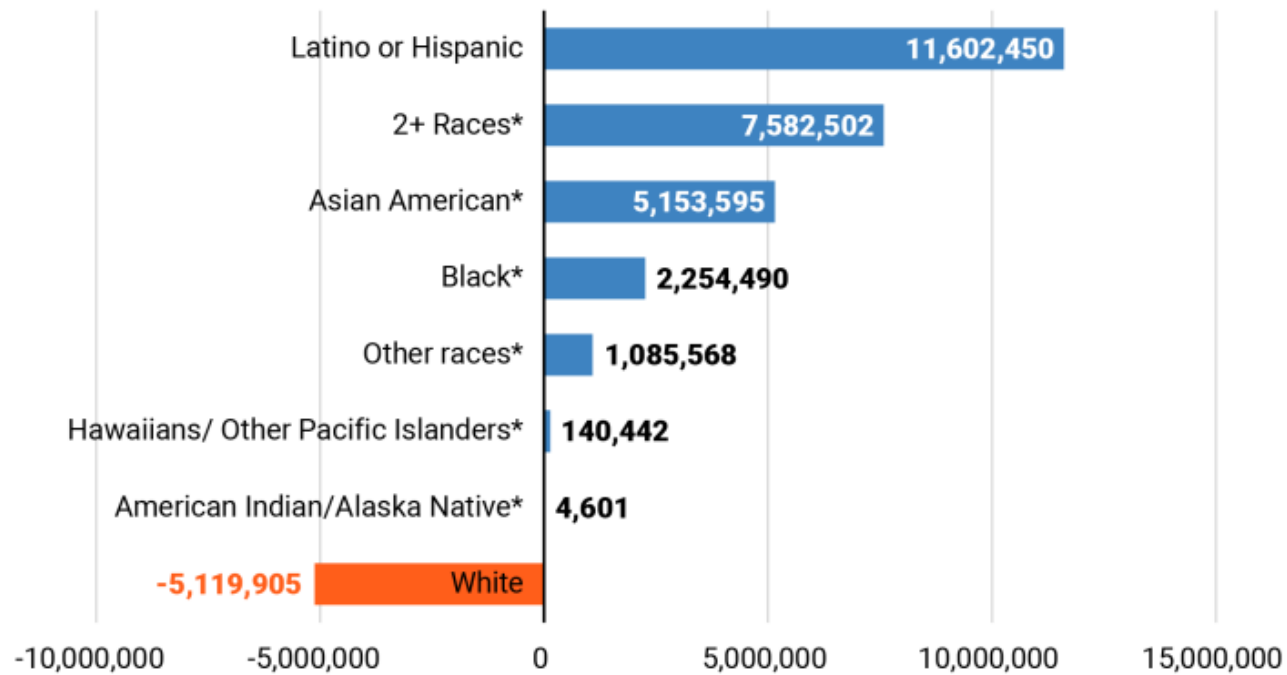


* includes people of all races who are Hispanic/Latino

Source: U.S. Census Bureau



Figure 2. Change in US population for race and ethnic groups, 2010-2020



* non-Latino or Hispanic members of racial group

Source: William H. Frey analysis of 2010 and 2020 U.S. decennial censuses.

B Metropolitan Policy Program
at BROOKINGS

Black and Brown people are blamed ...again



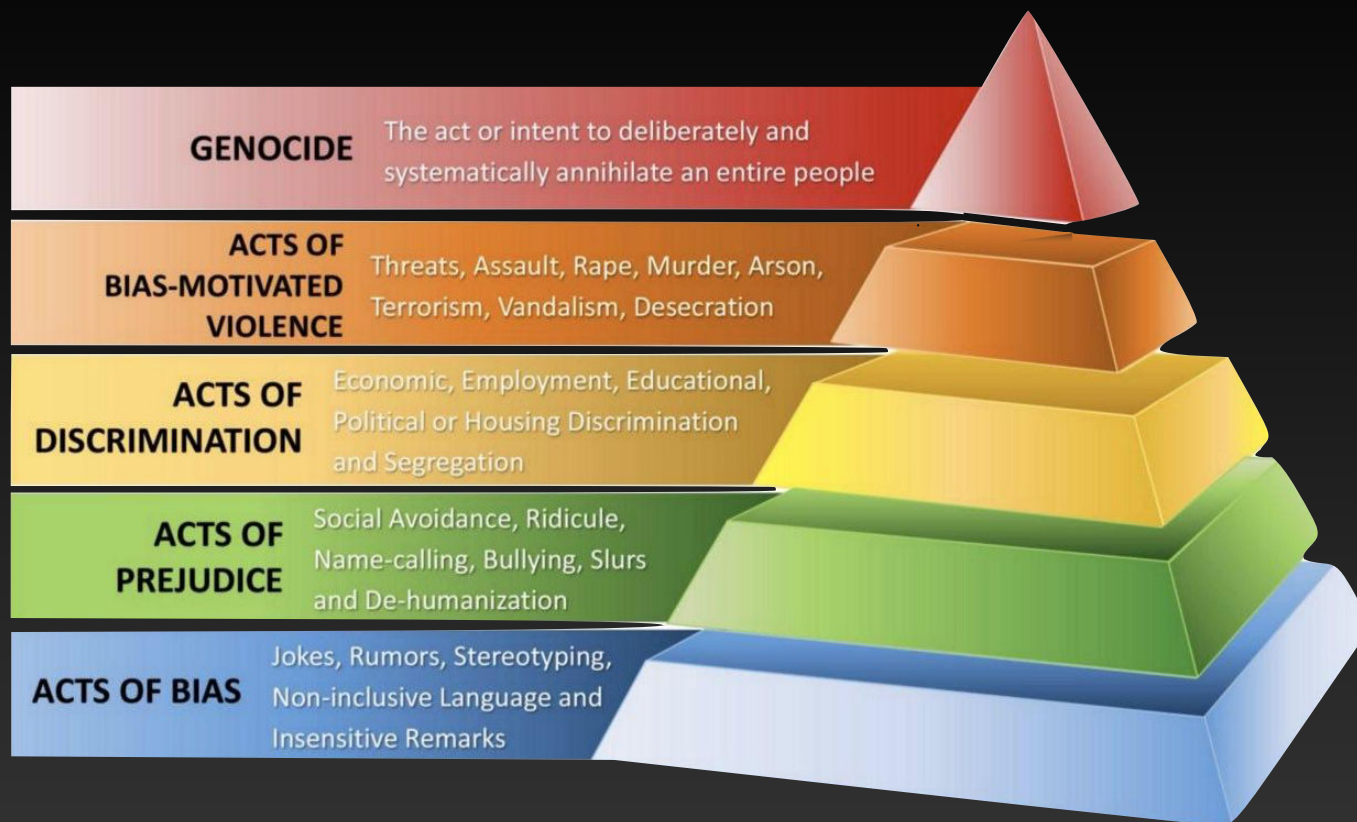
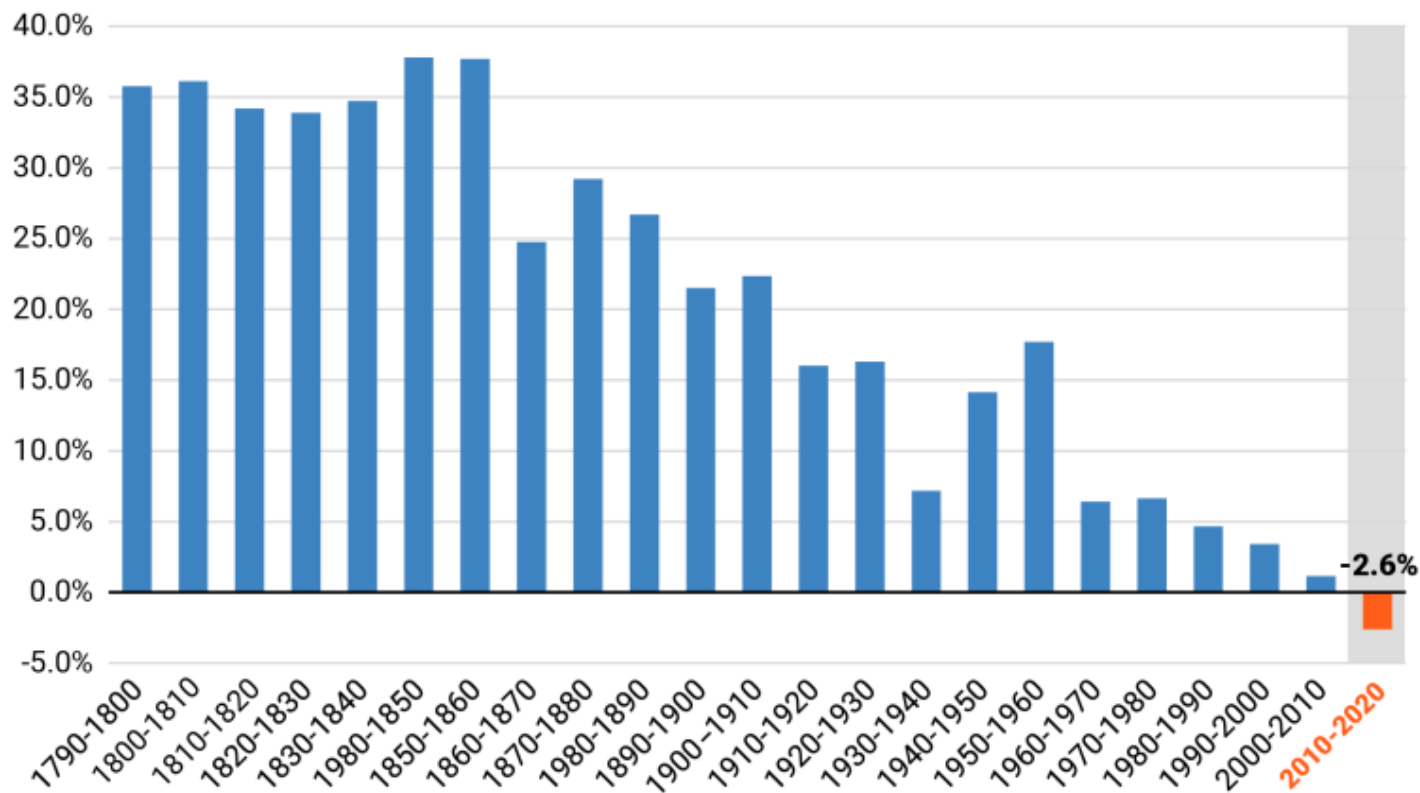


Figure 1. Decade white population growth rates, 1790-2020



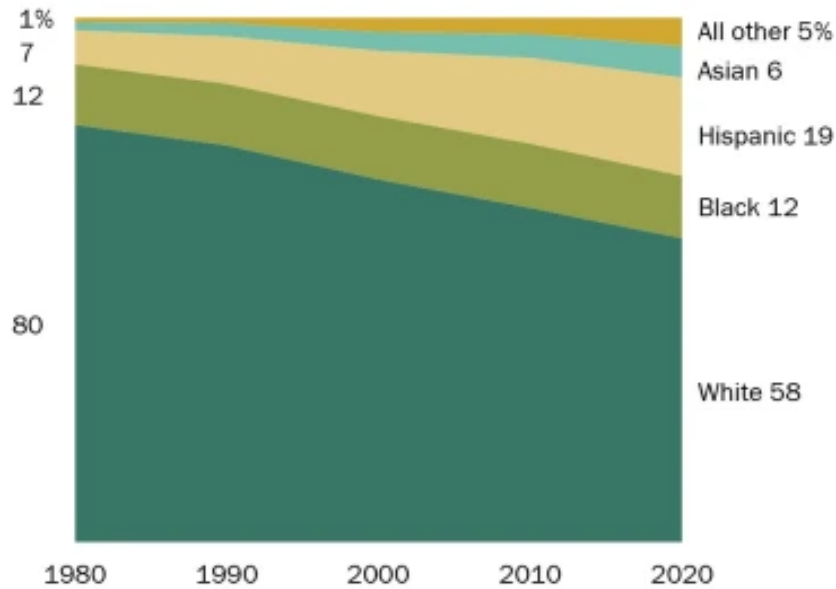
Source: William H. Frey analysis of 1790-2020 U.S. decennial censuses drawn from Census Bureau sources.

Note: Non-Latino or Hispanic whites from 1960-2020; all whites prior to 1960

B Metropolitan Policy Program
at BROOKINGS

Share of the U.S. population that identifies as White has declined for several decades

% of U.S. population, by race and ethnicity



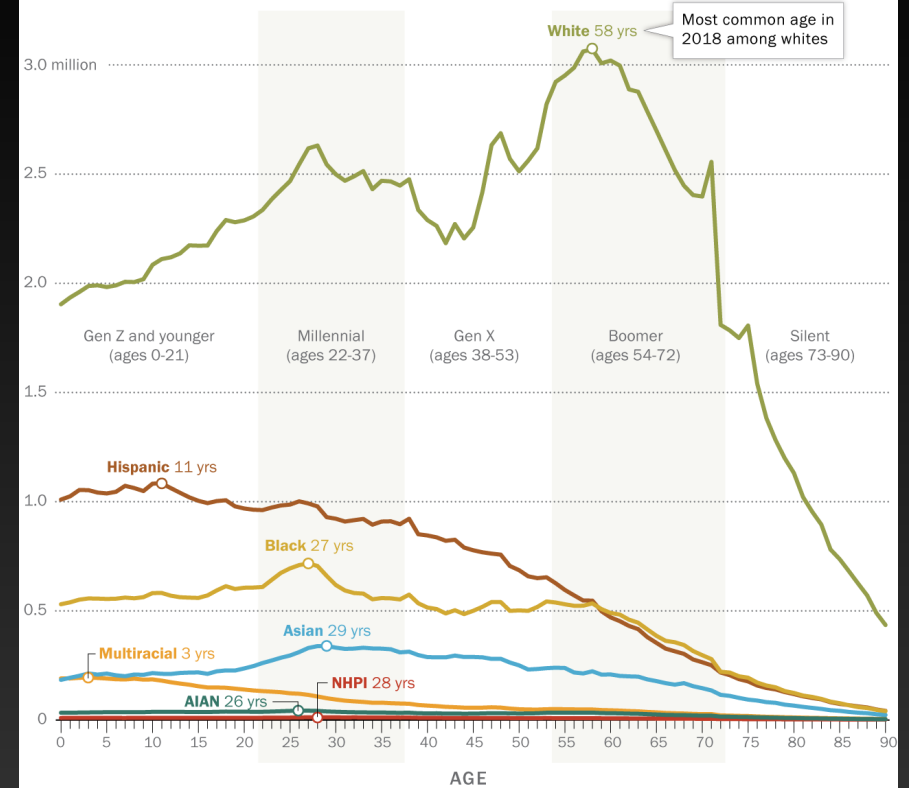
Notes: Race groups include non-Hispanics who report only one race for 2000-2020. Prior to 2000, decennial censuses allowed for only one race selection. "All other" includes people who are not Hispanic and are American Indian and Alaska Native, Pacific Islanders, Some Other Race and more than one race.

Source: Pew Research Center tabulations of PL94-171 census data for 2000-2020, Census Bureau tabulations for 1990 and IPUMS 5% census data for 1980.

PEW RESEARCH CENTER

In U.S., most common age for whites is much older than for minorities

Number of people of each age by race/ethnicity, 2018



Note: White, black, Asian, multiracial, American Indian/Alaska Native (AIAN) and Native Hawaiian/Pacific Islander (NHPI) groups include only non-Hispanics. All racial/ethnic groups are single-race, except multiracial Americans, who are two or more races, and Hispanics, who are of any race. Ages 91 and older are not shown.

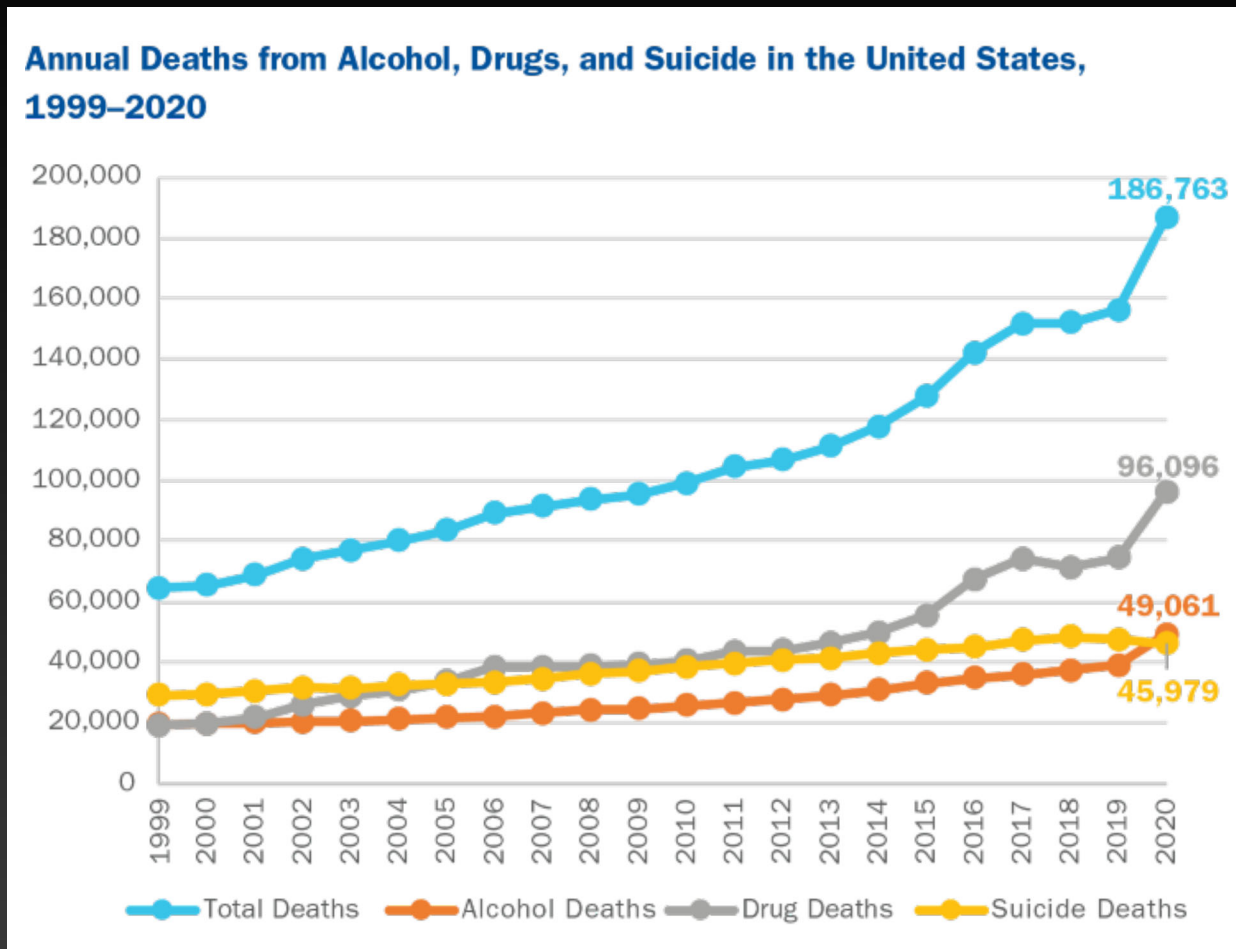
Source: U.S. Census Bureau population estimates as of July 1, 2018.

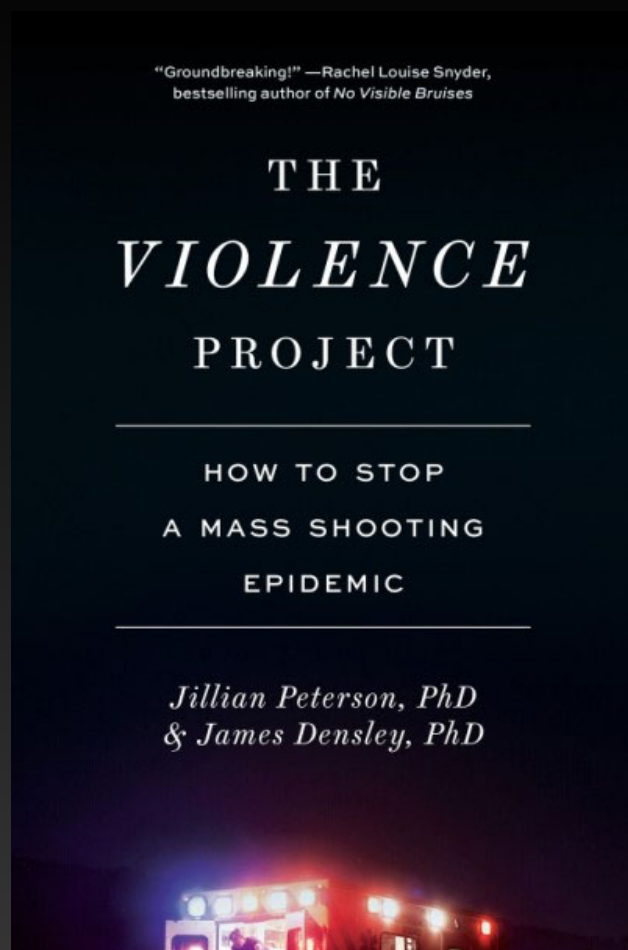
PEW RESEARCH CENTER

The unfavorable recent trends in premature death rate among non-Hispanic Whites outside large urban areas were primarily caused by self-destructive health behaviors likely related to underlying social and economic factors in these communities

The Epidemic of Despair Among White Americans: Trends in the Leading Causes of Premature Death, 1999–2015
<https://www.ncbi.nlm.nih.gov/pmc/articles/PMC5607670/#:~:text=All%20%20subpopulations%20with%20increased,Conclusions.>

Replacement Theory obscures ongoing public health issues

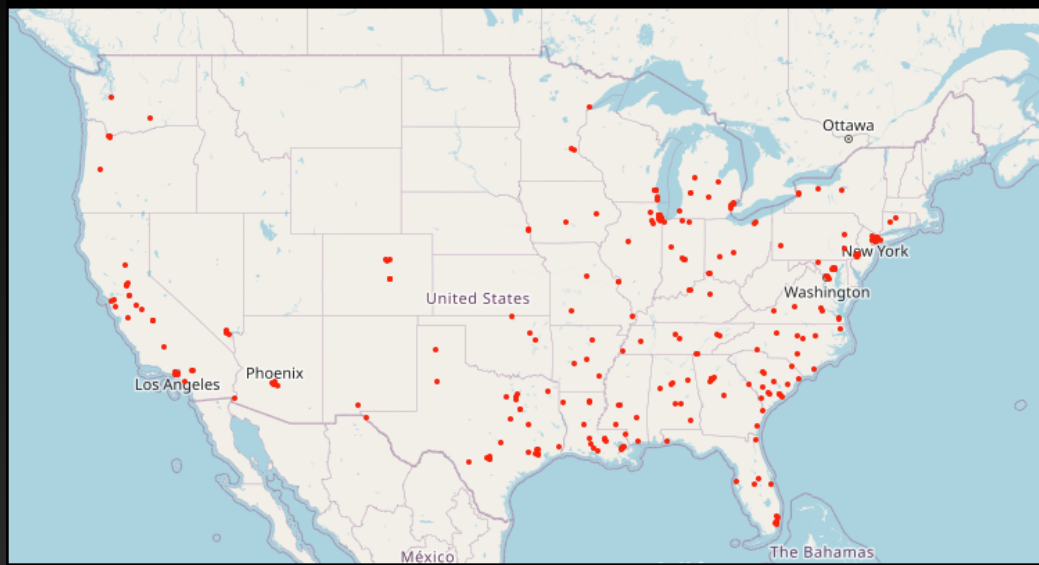




There's this really consistent pathway. Early childhood trauma seems to be the foundation, whether violence in the home, sexual assault, parental suicides, extreme bullying. Then you see the build toward hopelessness, despair, isolation, self-loathing, oftentimes rejection from peers. That turns into a really identifiable crisis point where they're acting differently. Sometimes they have previous suicide attempts. What's different from traditional suicide is that the self-hate turns against a group.

<https://www.politico.com/news/magazine/2022/05/27/stopping-mass-shooters-q-a-00035762>

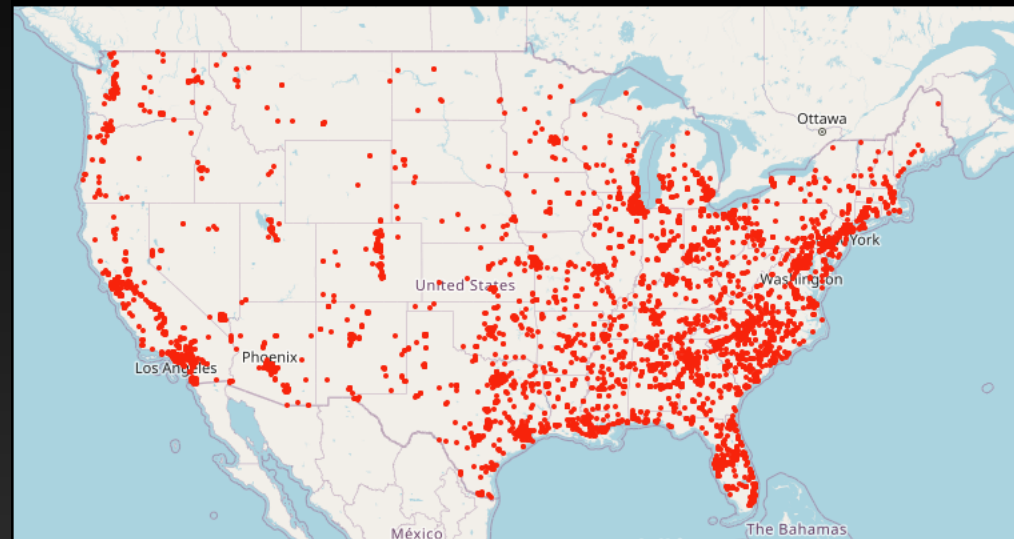
MASS SHOOTINGS IN 2022



January 1 - June 22, 2022

gunviolencearchive.org

NUMBER OF DEATHS IN 2022

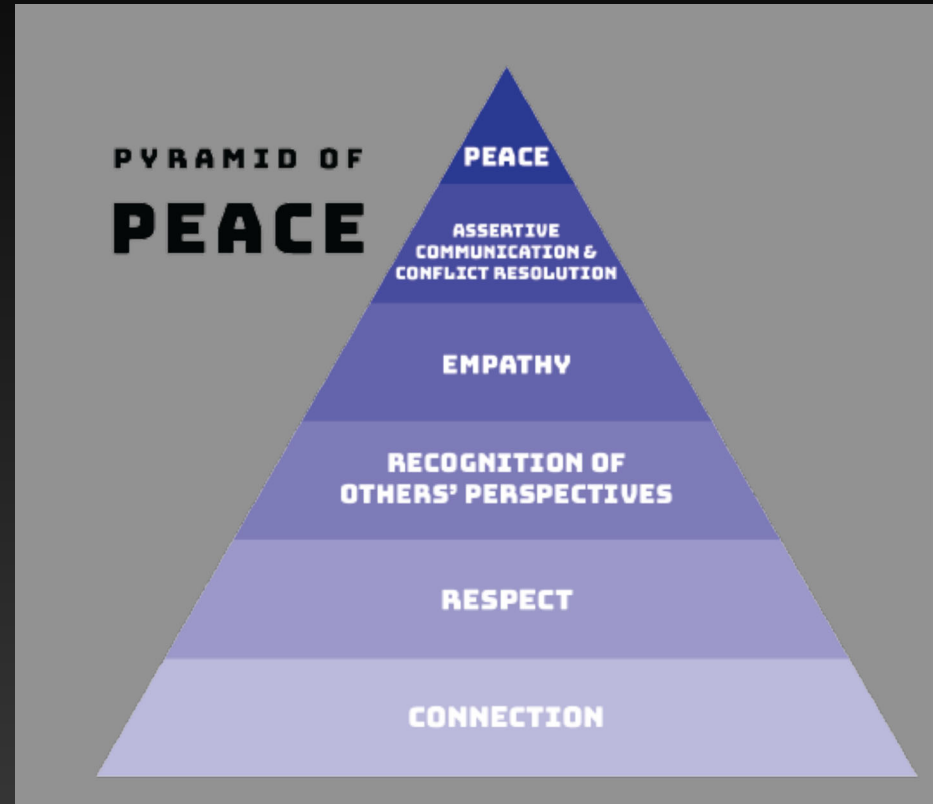


January 1 - June 22, 2022

gunviolencearchive.org



Social Justice for Everyone



Thoughts & Prayers?

Hope and Change.

Hope....

We shall
overcome
because the
arc of the
moral
universe is
long but it
bends
towards
justice



The arc of
the moral
universe
may bends
towards
justice but
it doesn't
bend on
its own



Welcome to the new normal

The 4 I's Of Oppression

Ideology
Generates ideas about
Truth, beauty, power,
morality
Manufactures Consent
(hegemony)
Informs Ways of thinking
Defines normal
Decides "the way it is"

Institutional
Policies Practices and Procedures
Formal structure for engagement
Bestows benefits and privileges
Enforces rules with consequences

Individual
Beliefs and values
Thoughts and feelings
about race
Lived experience
Family tradition

Interpersonal
Vertical and horizontal
Formal and informal
Family and Friends
Coworkers/ Team mates
Authority figures
Romantic relationships



What can I do?

**Values and
Leadership**

**Policies and
Procedures**

People

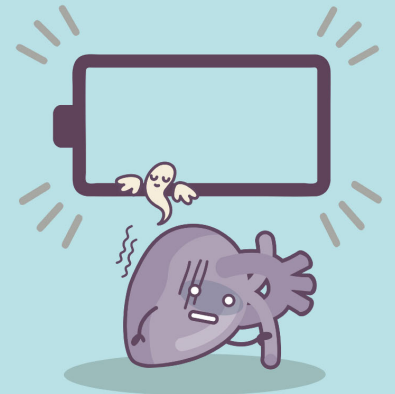
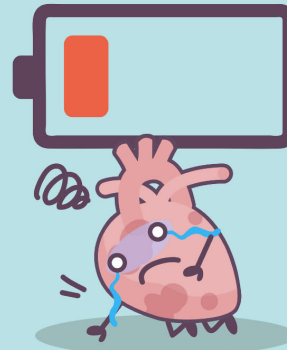
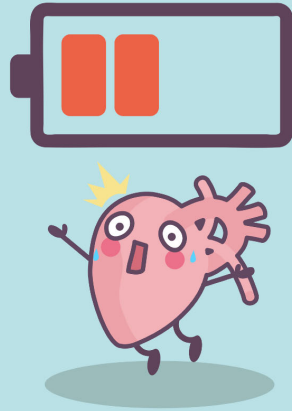
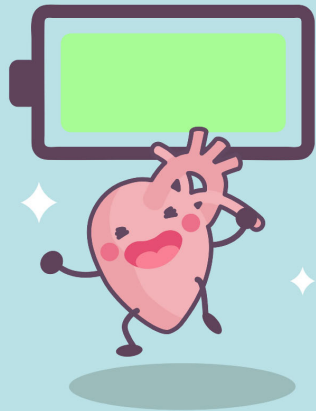
Relationships





Immediate

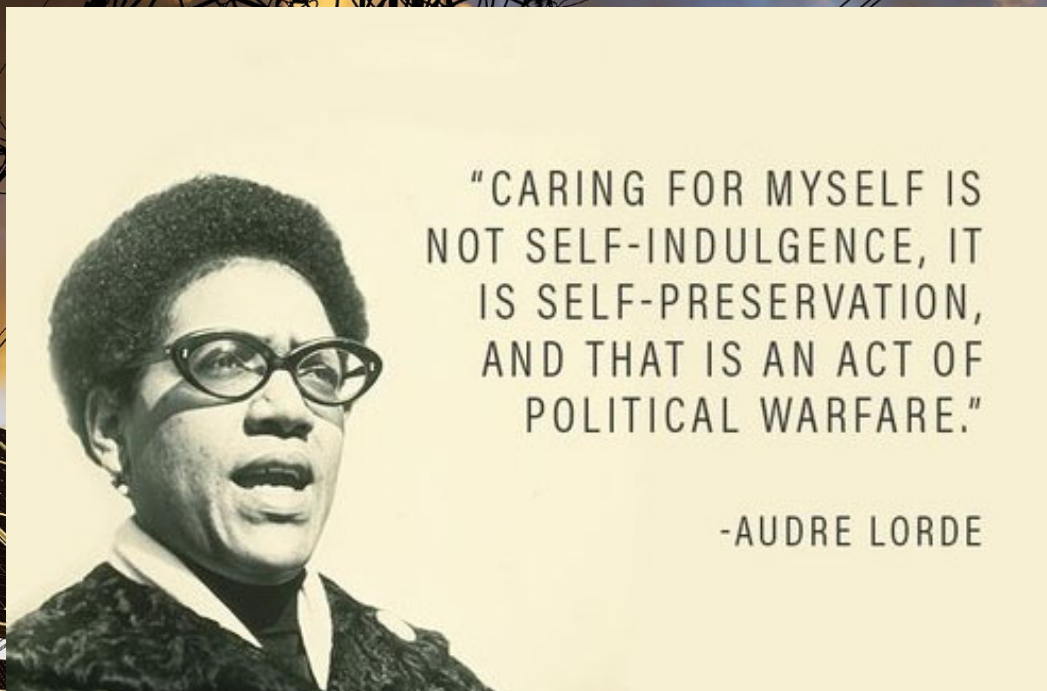
What is within my sphere of influence?





Sustainable

What connects me to my power?

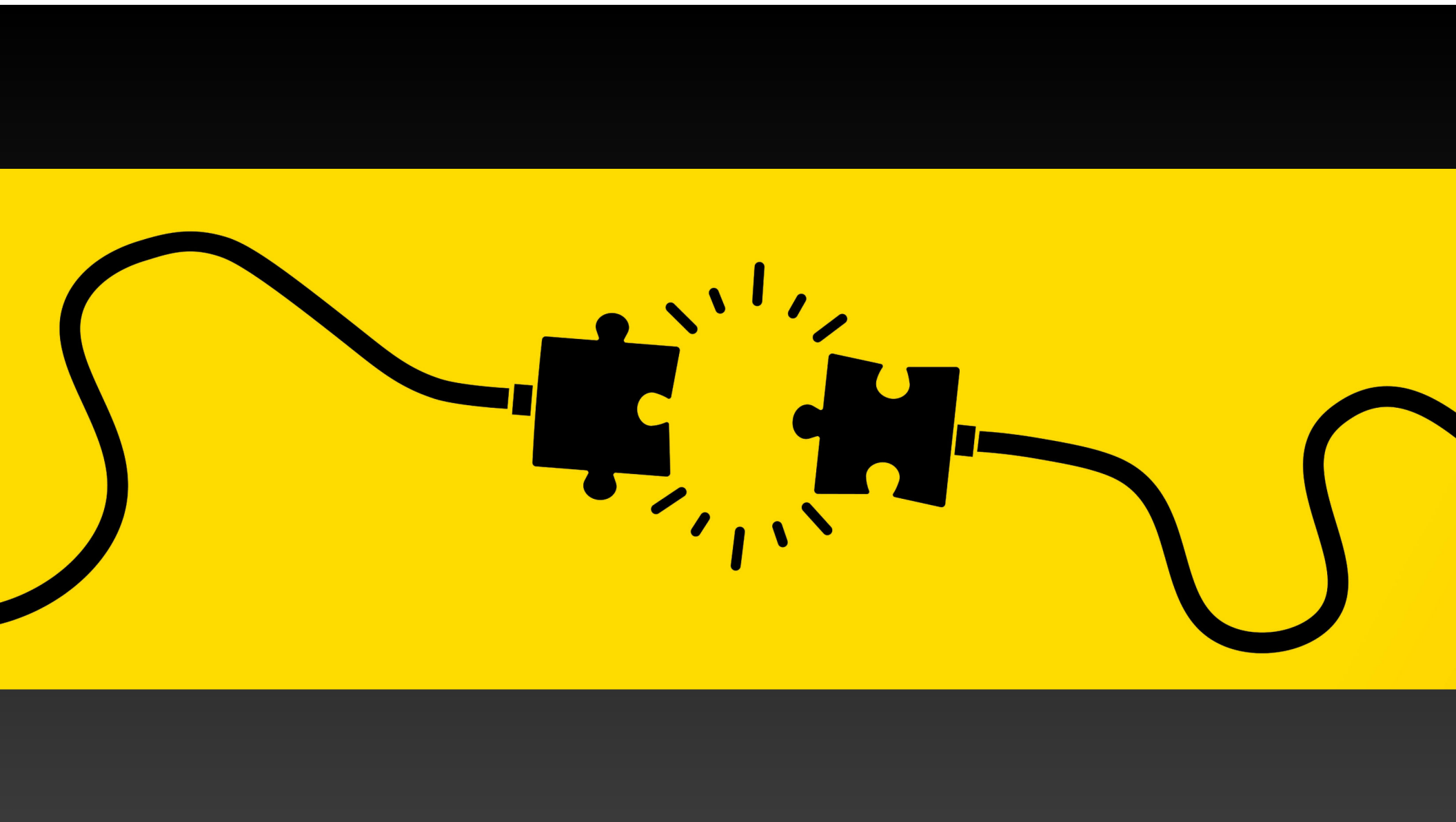


"CARING FOR MYSELF IS
NOT SELF-INDULGENCE, IT
IS SELF-PRESERVATION,
AND THAT IS AN ACT OF
POLITICAL WARFARE."

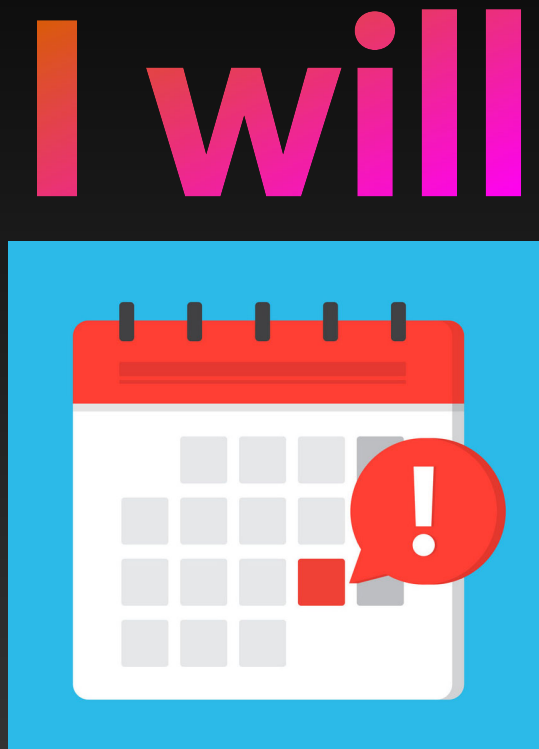
-AUDRE LORDE



Find your intersection



Use the power you have in your sphere of influence to affect individuals, interpersonal relationships and institutions to battle white supremacy and patriarchal capitalism



Intention



Action

**Changing everything might sound
daunting, but it also means there are many
places to start, infinite opportunities to
collaborate, and endless imaginative
interventions and experiments to create...
let's ask, "what can we imagine for
ourselves and the world?"**



Mariame Kaba



Navigators Consulting

Shifting Culture

Susan X Jane

insta: @susanxjane

twitter: @susanjane19

www.culturenavigators.com

susan@culturenavigators.com